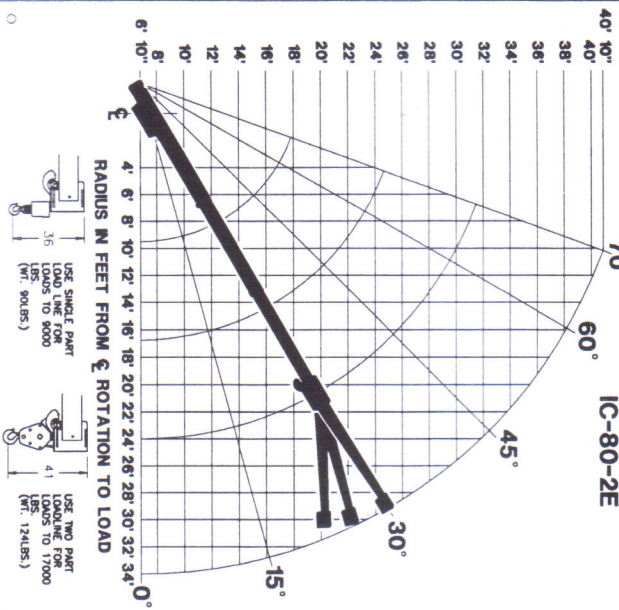


### CRANE CAPACITY CHART IC-80-2E



LOAD RADIUS FEET	CAPACITIES APPLY TO OPERATION ON FIRM LEVEL SURFACE		CAPACITIES IN POUNDS	
	MAIN BOOM OR EXTENSION	360° ROTATION	OVER FRONT	ON RUBBER OUTRIGGERS
5	9500	17000	11600	17000
6	7800	14500	10200	14500
8	5900	10250	8250	10250
10	3900	7700	6200	7700
12	2900	6550	4550	6550
14	2300	5550	3550	5550
16	1850	4550	2850	4550
18	1550	3950	2400	4050
20	1300	3250	2050	3650
22	1100	2875	1750	3300
24	925	2475	1550	3100
26	850	2250	1350	2750
28	700	2000	1175	2500
30	600	1775	1025	2300
32	500	1625	900	2100
34	425	1400	800	1950
<b>10-FOOT BOOM EXTENSION - STRAIGHT ON OFFSET</b>				
<b>BOOM EXTENSION</b>		<b>MAIN BOOM ANGLE</b>		
0°	2600	3200	5000	7000
15°	2400	2700	3500	4200
30°	2250	2500	3000	3500

\* USE 0° FOR STRAIGHT BOOM EXTENSION  
 † USE 0°, 15° OR 30° FOR OFFSET BOOM EXTENSION  
 BOOM EXTENSION LOADS MUST NOT EXCEED MAIN BOOM CAPACITY

- CARRY DECK CAPACITY 14000 LBS.  
 (LOAD CENTERED OVER AXLE AT CREEP SPEED)
- PERSONNEL BUCKET CAPACITY, OUTRIGGERS EXTENDED - 300 LBS. PER BUCKET - 600 LBS. TOTAL. THE BOOMS ON THIS UNIT ARE ALL STEEL AND HAVE NO LINE VOLUME RATING. MAXIMUM HYDRAULIC PRESSURE 3000 PSI.  
 DEDUCT 100 LBS. FROM ALL CAPACITIES WHEN BOOM EXTENSION IS STOWED ON BASE BOOM.  
 ALL CAPACITIES APPLY TO OPERATION ON FIRM LEVEL SURFACES.
- OPERATION:
1. READ AND UNDERSTAND OWNERS MANUAL BEFORE OPERATING THIS CRANE.
  2. CHECK LEVEL OF HYDRAULIC OIL DAILY.
  3. CHECK UNIT FOR VISIBLE DEFECTS AND LOOSE PARTS.
  4. START ENGINE.
  5. SET VEHICLE PARK BRAKE SECURELY.
  6. EXTEND OUTRIGGERS TO SOLID FOOTING.
  7. OPERATE ALL HYDRAULIC CONTROLS SLOWLY AND DELIBERATELY FOR SMOOTH MOTION.

THE LOAD HOIST LINE ON THIS UNIT MUST BE 9/16" DIA. 6 X 37 - WIRE-TIP WIRE ROPE WITH A MINIMUM BREAKING STRENGTH OF 11,500 LBS. (SEE WIRE ROPE PRESSURE 1000 X 19 (110 PSI) OR 800 X 19 (110 PSI) BELTED - 135 PSI RADIAL).

CAPACITIES ON OUTRIGGERS ARE 85% OF TIPPING LOADS. CAPACITIES ON RUBBER ARE 75% CAPACITIES BELOW BOLD LINE ARE LIMITED BY TIPPING. OTHER CAPACITIES ARE LIMITED BY STRUCTURAL OR HYDRAULIC CAPABILITY.

MODEL NO. **IC-80-2E** SERIAL NO. [REDACTED]

**BRODERSON MANUFACTURING CORP.**  
**LENEXA, KANSAS**