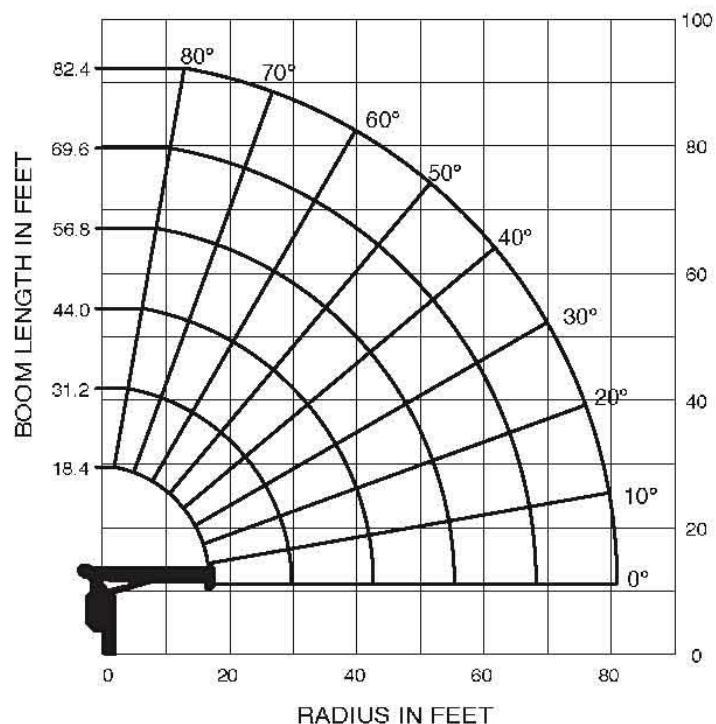


TM-1882 (18 ton) crane capacity

WORKING RANGE



The above lifting heights and boom angles are based on a straight (unladen) boom, and allowance should be made for boom deflection obtained under laden condition.

NOTE:

- 1) Rated lifting capacities on this chart show maximum allowable loads with outriggers properly extended on a firm surface and the crane leveled and mounted on a factory recommended truck. The rated lifting capacities in shaded areas are based on crane strength and others, on its stability (not to exceed 85% of tipping).
- 2) The weight of handling devices such as hook block, slings, etc., must be considered part of the load and must be deducted from the rated lifting capacities.
- 3) Weights of any accessories attached to the boom or load line must be deducted from the rated lifting capacities.
- 4) The operator must reduce loads to allow for such factors as wind, ground conditions, operating speed and the effects of freely suspended loads such as boom deflection.
- 5) For full capacity 360° around the truck, the chassis requires the front stabilizer (ex. rear mounted) and additional counterweight in the underside of the bed.
- 6) For boom lengths or radius not shown, use the rated lifting capacity of next longer boom lengths or radius.
- 7) For boom lengths longer than 31.2 ft., extend outriggers to max. or mid.
- 8) For boom lengths longer than 56.8 ft., extend outriggers to max.
- 9) 56.8 ft. boom means 1st mark on 4th boom section side plate is half visible.
- 10) 69.6 ft. boom means 2nd mark on 4th boom section side plate is half visible.
- 11) Winch wire rope: diameter × length 9/16" × 279', breaking strength 30,100 lbs.
- 12) Keep at least 3 wraps of loadline on winch drum.
- 13) Maximum load for number of part lines is as shown below.
- 14) Part of lines are:



No. of part lines	1	2	4	5
Max. of load	7,200 lbs.	14,400 lbs.	28,800 lbs.	36,000 lbs.

RATED LIFTING CAPACITY (IN POUNDS)

Load radius (ft.)	18.4 ft. Boom			31.2 ft. Boom			44 ft. Boom		56.8 ft. Boom		69.6 ft. Boom		82.4 ft. Boom		Load radius (ft.)					
	Loaded Boom Angle	Outriggers Extended			Loaded Boom Angle	Outriggers Extended			Loaded Boom Angle	Outriggers Extended		Loaded Boom Angle	Outriggers Extended							
		Max.	Mid.	Min.		Max.	Mid.	Min.		Max.	Mid.		Max.	Mid.						
5	75°	36,000	30,000	22,000	76°	17,450	17,450	13,200							5					
8	64°	23,000	23,000	15,200	73°	17,450	17,450	8,750	79°	17,450	17,450				8					
10	57°	19,350	19,350	10,100	69°	15,600	15,600	6,350	76°	14,650	14,650	80°	9,050	9,050	10					
12	48°	16,550	16,550	7,400	64°	13,650	13,650	4,800	73°	12,750	12,750	78°	9,050	9,050	12					
14	38°	14,550	14,550	5,650	60°	12,300	11,600	3,750	70°	11,500	11,000	76°	9,050	9,050	14					
16	24°	13,000	12,700	4,500	51°	10,000	7,700	2,350	65°	9,400	7,700	72°	8,450	7,700	16					
20					36°	8,100	4,950	1,300	57°	7,600	4,950	66°	6,900	4,950	20					
25									48°	6,250	3,350	61°	5,650	3,350	25					
30									38°	5,050	2,400	54°	4,800	2,400	30					
35									23°	3,800	1,650	47°	3,800	1,650	35					
40												39°	3,400	1,150	40					
45												29°	2,700	900	45					
50												41°	2,300	550	50					
55												33°	2,000	470	55					
60												22°	1,600	350	60					
65															65					
70															70					
75															75					
80															80					
	0°	8,400	8,400	4,050	0°	3,950	3,400	600	0°	1,850	1,300	0°	1,100	700	0°	600	0°	350		
		(16.89ft.)				(29.69ft.)				(42.48ft.)			(55.28ft.)			(68.07ft.)			(81.33ft.)	

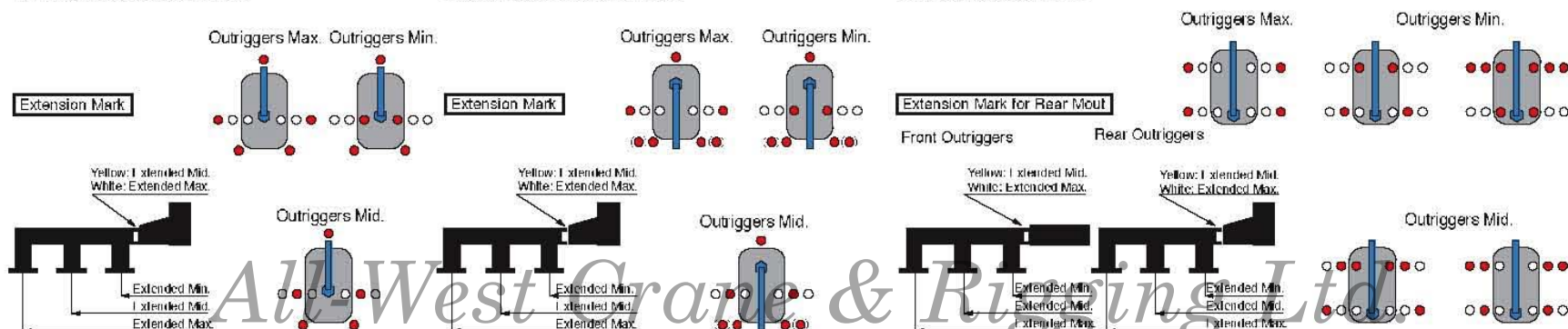
Notice: The chart is only for reference and should not be used for operation.

Maintain a clearances at least 10 feet between any part of the crane, load line or load and any electrical line carrying up to 50,000 volts. One-foot additional clearance is required for every additional 30,000 volts or less.

<TRACTOR MOUNTED>

<CAB BACK MOUNTED>

<REAR MOUNTED>



250-249-5151